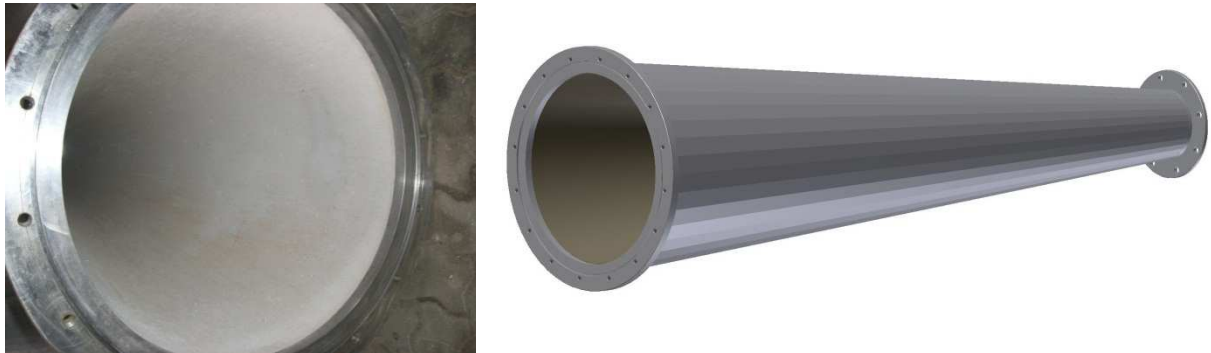


## Separation Cone

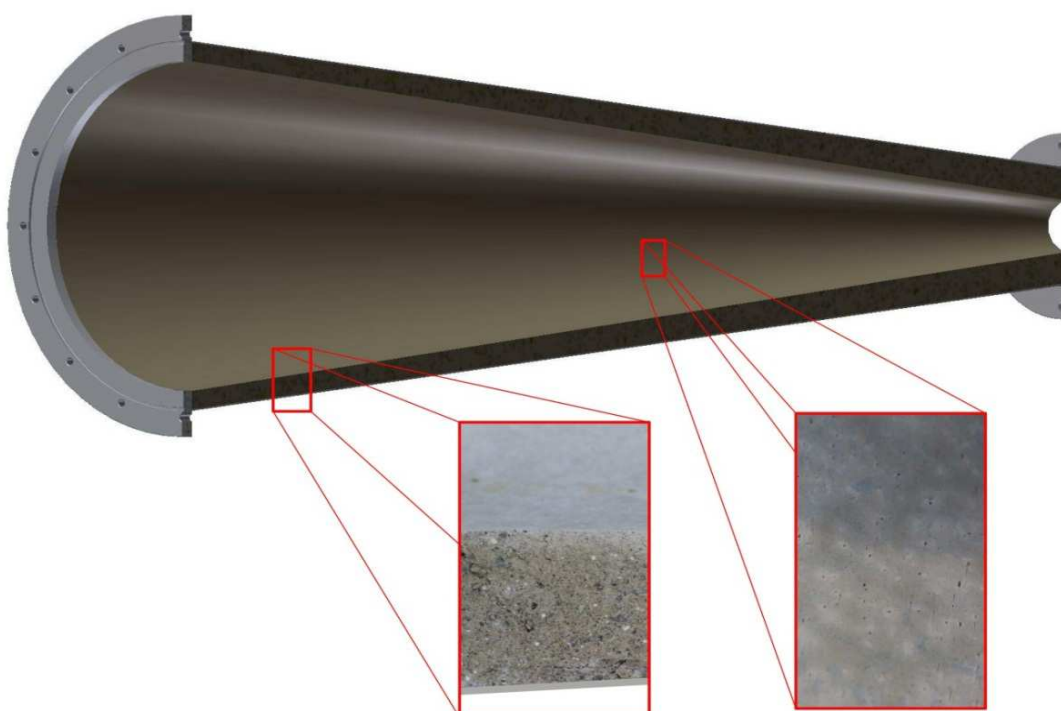
### Product characteristics



The separation cone produced by the company FFK has all characteristics which are required for the use in the paper industry. The new developed AO1 material is particularly suitable for the separation of heavy parts, which provide a high abrasive wear on the inner wall. The separation cone consists of one piece, which has the advantage that no congestion edges are produced by component changes. A congestion edge concentrates the wear on one point and shortens the lifetime of the cone.

### Design configuration

The cone of the company FFK has a robust and stainless steel casing, which is coated with the hard wear layer AO1. The thickness of the wear-resistant coating layer depends on the cone type. The standard products have a wall thickness of 25mm up to 60mm. The special manufacturing process provides an almost pore-free and absolutely smooth solid casted wear layer. The whole cone is produced in one piece, which means that there is no composition of two parts on the separation surface. This is necessary in order to avoid micro turbulences, which reduces the deposition rate and increase the wear.



## Product portfolio:



The company FFK specializes in designing and manufacturing of machines and hard wear layer. We produce machines and separation cones based on customer requirements to optimize customer's processes.

### Performance data:

- Tree types of cones:
  - 300 l/min up to 1.000 l/min
  - 1.000 l/min up to 4.000 l/min
  - 7.000 l/min up to 12.000 l/min
- Consistency between 1 to 6%
- 3 to 6 times longer lifetime to comparable cones (depending on the application)
- One year warranty for the wear layer AO1 (junk removal must be ensured)

### Additional Products:

- Spiral inlet head
- Rotation breaker
- Junk traps

### Advantages:

- reduced wear
- lower maintenance costs
- reduction of unscheduled production downtimes
- optimized processes with higher capacities
- increasing customer satisfaction

### Options:

- cone with included rotation breaker - only one piece



- wear indicator, shows the maintenance personnel if the wear layer has reached a critical thickness while operation
- The recycling of cones and spool pieces are possible – detail information are given on request

### FFK GmbH

Winzendorf 143 | 8225 Pöllau  
+43 (0)3335 466 33  
office@ffk-gmbh.at  
[www.ffc-gmbh.at](http://www.ffc-gmbh.at)